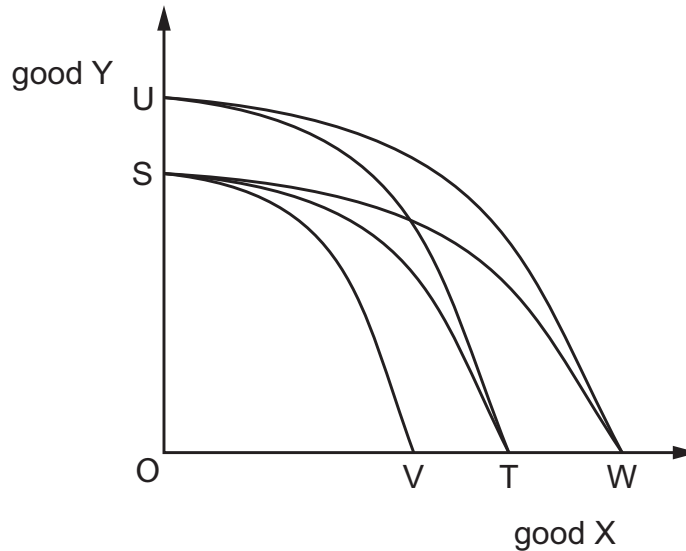


- 5 The diagram shows a production possibility curve (PPC) for a country that produces two goods, X and Y. The initial PPC is given by ST.



What is the effect on the PPC when the productivity of workers producing good X increases?

- A The PPC shifts from ST to SV.
- B The PPC shifts from ST to SW.
- C The PPC shifts from ST to UT.
- D The PPC shifts from ST to UW.