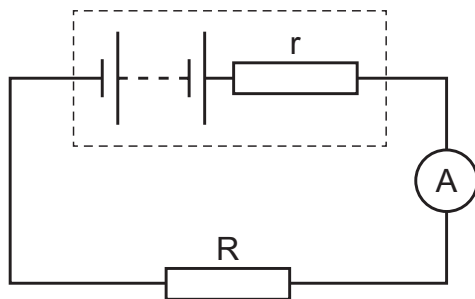


- 35** The diagram shows a circuit with a battery connected to a resistor R . The battery has an internal resistance represented by resistor r .



A second resistor, identical to R , is connected in parallel with R .

Which row describes the changes to the potential difference (p.d.) across r and the current shown on the ammeter when the second resistor is connected?

	p.d. across r	current shown on ammeter
A	decreases	decreases
B	decreases	increases
C	increases	decreases
D	increases	increases