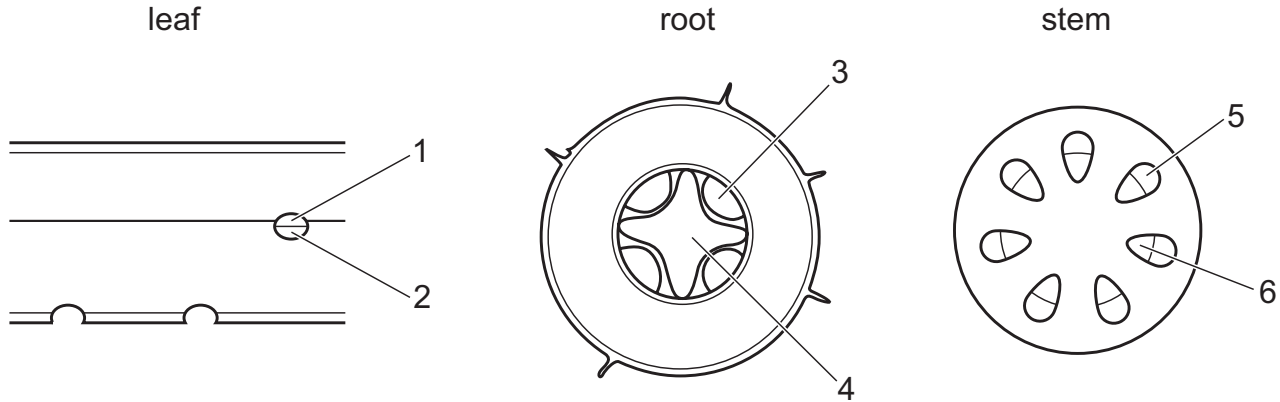


13 The diagrams show cross-sections of a leaf, a root and a stem.



NOT TO SCALE

In which row do the numbers represent the xylem in the leaf, the root and the stem?

	leaf	root	stem
<b>A</b>	1	3	5
<b>B</b>	1	4	6
<b>C</b>	2	3	5
<b>D</b>	2	4	6