

2 Fig. 2.1 is a photomicrograph of human blood.

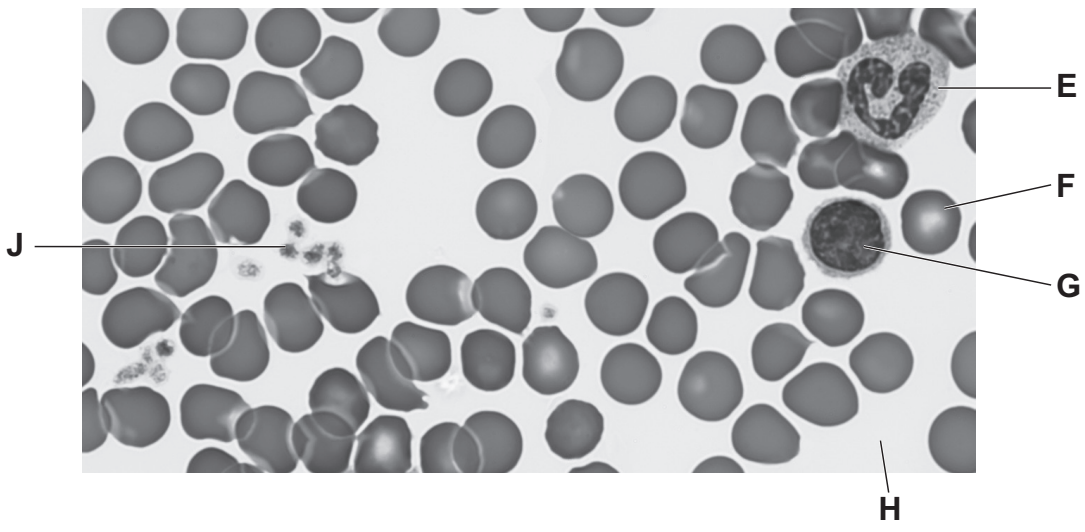


Fig. 2.1

(a) Use the information in Fig. 2.1 to complete Table 2.1.

Table 2.1

component of blood	letter from Fig. 2.1	function
red blood cell		
		production of antibodies
	H	
		phagocytosis
platelet	J	

[5]

(b) Some diseases are transmissible.

(i) State the name of a pathogen that is transmitted by direct contact with blood.

..... [1]

(ii) State **two** ways that a pathogen can be transmitted **indirectly**.

1

2

[2]

(c) Describe the role of antibodies in the defence against pathogens.

.....

 [3]

(d) Explain how active immunity differs from passive immunity.

.....

 [3]

[Total: 14]