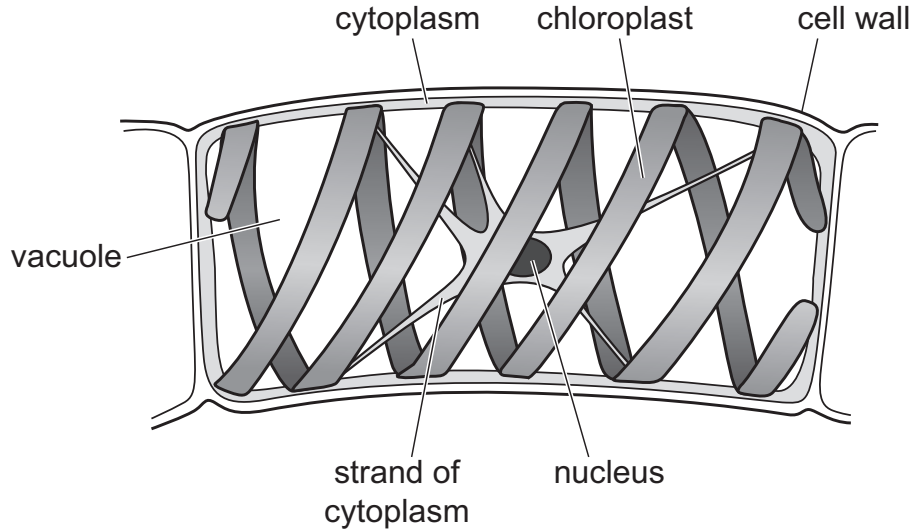


3 The diagram shows a single cell from an organism called *Spirogyra*.



Which features does *Spirogyra* share with plant cells?

	cell wall	chloroplast	cytoplasm	nucleus	vacuole
A	yes	yes	yes	yes	yes
B	yes	yes	no	no	yes
C	yes	no	yes	yes	no
D	no	yes	yes	no	yes