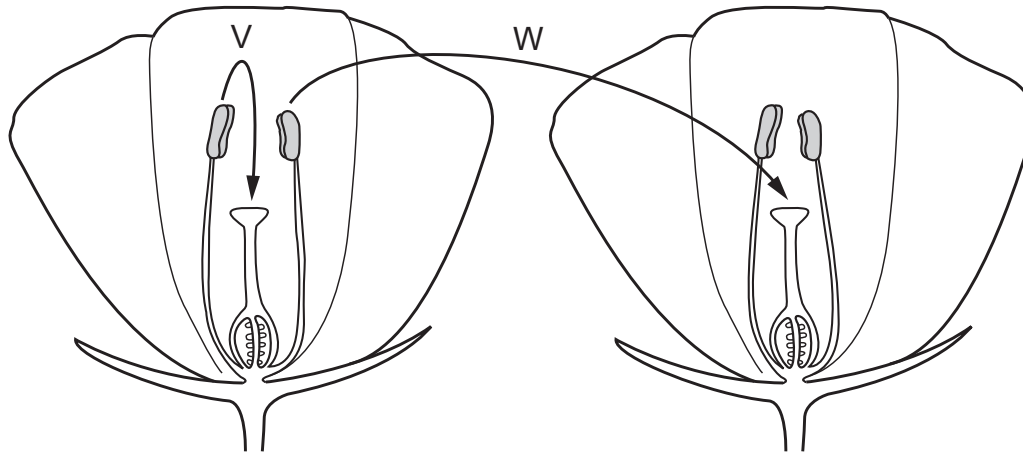


- 27 The diagram shows two methods of pollination, V and W. The two flowers are on different plants of the same species.



A student made three conclusions about these two methods of pollination.

- 1 Method V will produce genetically identical offspring.
- 2 Method W will produce genetically different offspring.
- 3 Method W increases the ability of the species to adapt to its surroundings.

Which conclusions are correct?

- A** 1, 2 and 3 **B** 1 and 2 only **C** 1 and 3 only **D** 2 and 3 only