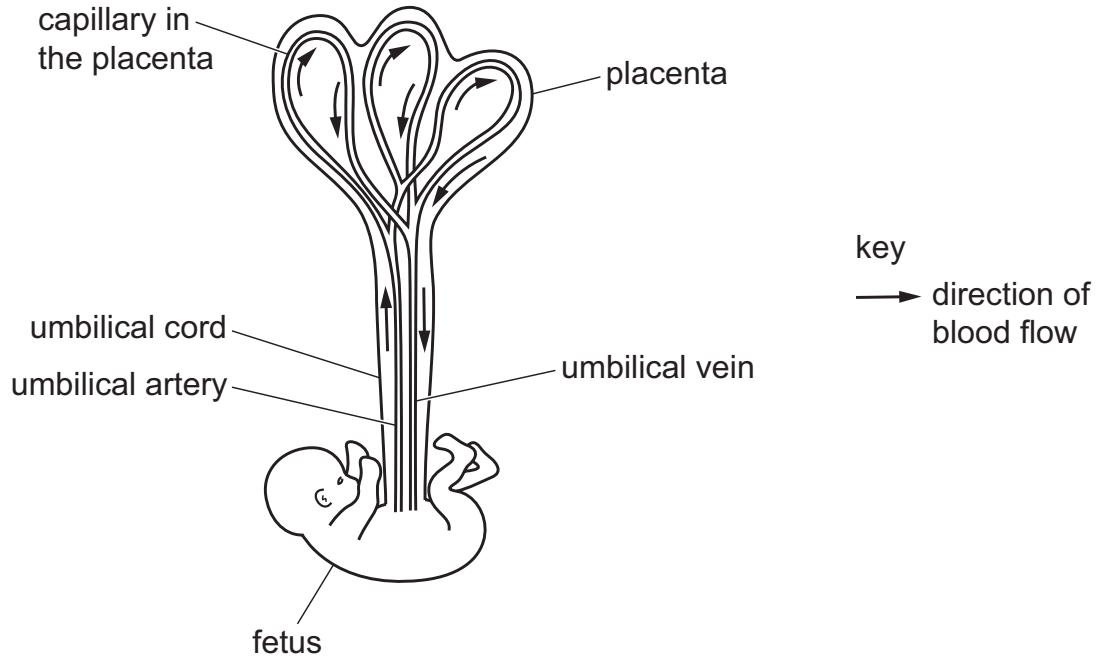


28 The diagram shows the blood supply between a fetus and a placenta.



Which row shows the concentration of substances in the umbilical artery and umbilical vein?

	umbilical artery	umbilical vein
<b>A</b>	high nutrient concentration	high urea concentration
<b>B</b>	high urea concentration	high carbon dioxide concentration
<b>C</b>	low carbon dioxide concentration	low nutrient concentration
<b>D</b>	low oxygen concentration	low urea concentration