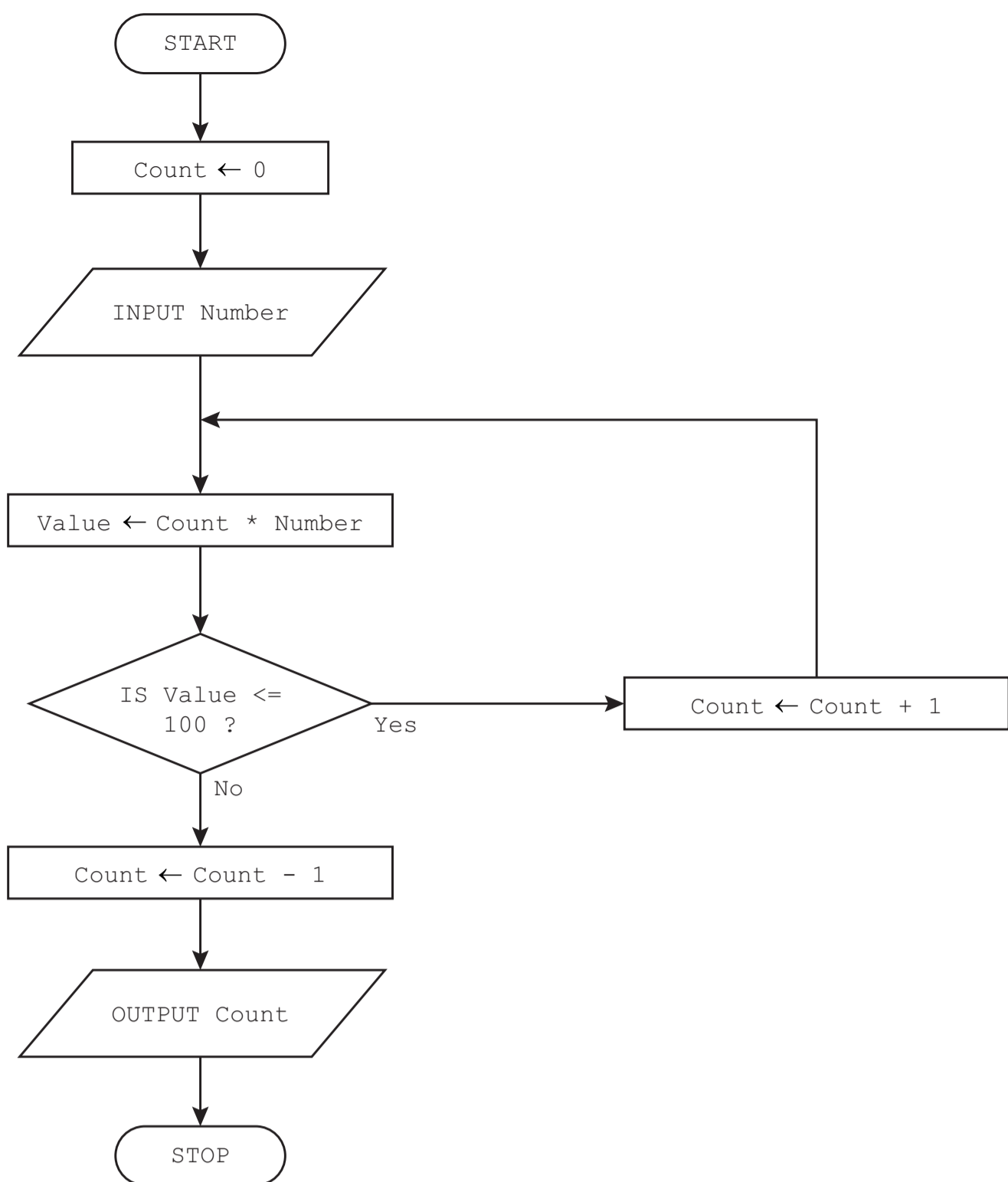


7 The flowchart represents an algorithm.



(a) Complete the tables, using the flowchart, for the given data:

Input data: 20

Count	Number	Value	Output

Input data: 110

Count	Number	Value	Output

[4]

(b) State the purpose of the algorithm on page 8. A copy of the algorithm is provided for you on page 11.

..... [1]

(c) State a suitable data type for the variable Count

..... [1]

(d) Write the algorithm in pseudocode. A copy of the algorithm is provided for you on page 11.

.....

 [4]

