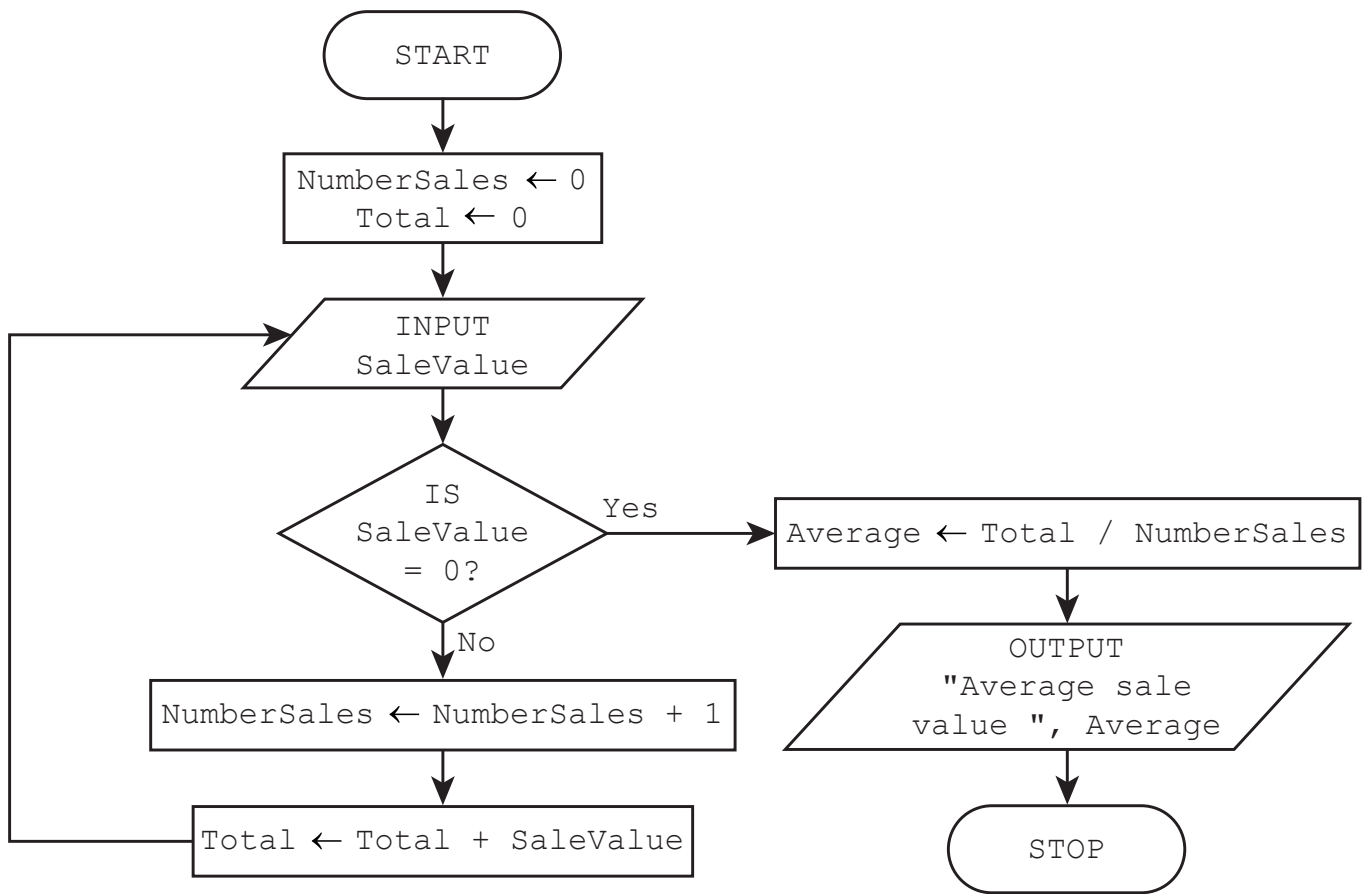


8 This flowchart represents an algorithm to find the average value of a number of sales.



(a) Complete the trace table using this data:
5.50, 3.40, 6.25, 3.85, -11.00, 0

NumberSales	Total	SaleValue	Average	OUTPUT

[4]

(b) Identify the error in the algorithm and describe how to correct it.

Error

.....

Correction

.....

.....

.....

[3]