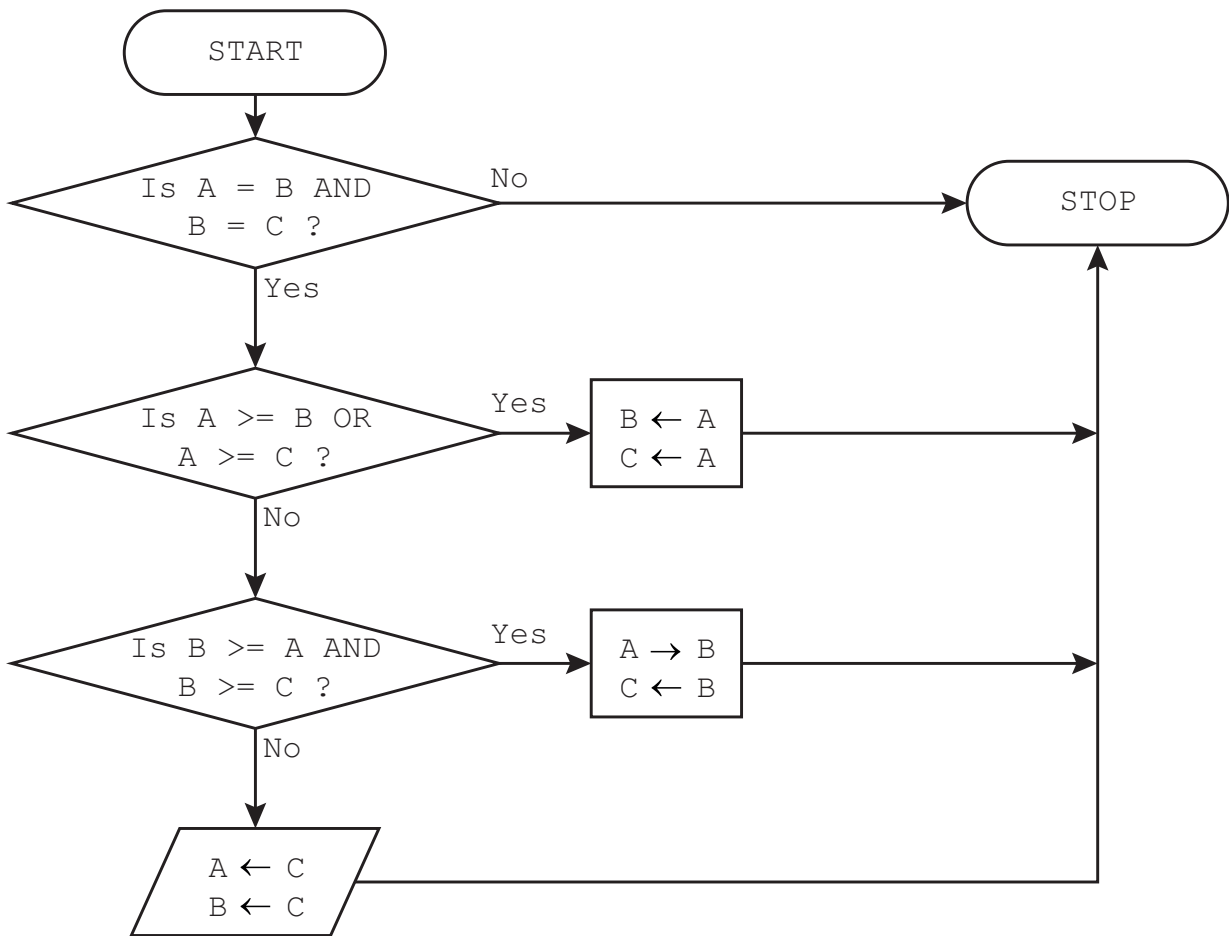


- 9 A flowchart checks that values stored in three variables are identical. If they are different, the highest value is stored in all three variables.



Identify **four** errors in the flowchart and suggest a correction for each error. You may label each error on the diagram with the corresponding error number.

Error 1 .....

Correction .....

Error 2 .....

Correction .....

Error 3 .....

Correction .....

Error 4 .....

Correction .....