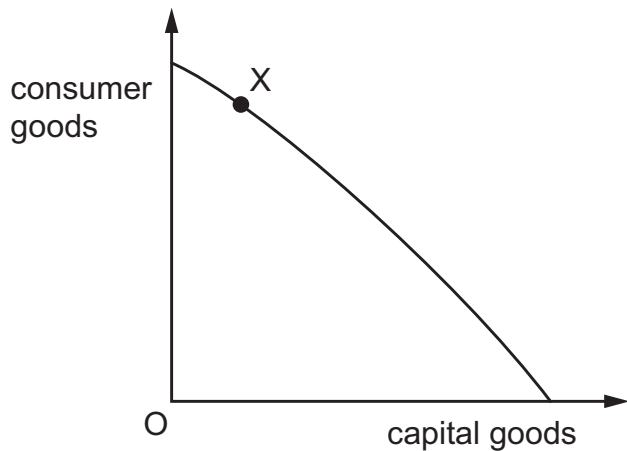


- 3 An economy produces different types of goods using its limited resources. This can be illustrated by a production possibility curve (PPC).



What does point X on the PPC show?

- A All resources are used for the production of consumer goods.
- B More resources are allocated to producing capital goods than consumer goods.
- C Resources are allocated to produce a mixture of consumer goods and capital goods.
- D Total resources are not being fully utilised for production of these goods.